



DRUM

14.D635.10

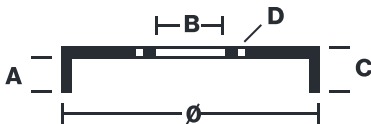
The 14.D635.10 drum is synonymous with reliability

Brembo has developed several design solutions for drum brakes which combine multiple materials to reduce the overall weight. The most popular range of lamellar graphite cast iron drums is supplemented by cast iron drums with a steel sprocket flange and aluminium drums, whereby only the inner part of the drum on which the shoes operate are made of lamellar cast iron, namely the brake band. Additionally drums with built-in bearing kit and hub are added to this range.

- ✓ OE-equivalent
- ✓ Brembo quality
- ✓ Safety
- ✓ Durability



Technical specifications



EAN code 8020584234426	Axle Rear	Diameter 203,1 mm
Width 42,2 mm	Height 66	Number of holes 4
Centering 68 mm	Max diameter 204,5 mm	

14.D635.10	
AP	55037
BREGO	BT 1175
DIMENSION	203.1 x 42.25 mm
MAX DIA	204.5 mm
BALANCING	GUARANTEED
MATERIAL	SUB-GROUP 1
WEIGHT	4.5 kg
	90R
	02D01202/59684

DATE : 17/01/2019 VERSION : 00

COMPATIBLE VEHICLES

COMPATIBLE OE PART NUMBERS

43206EE51B NISSAN