



# DRUM

## 14.5609.10

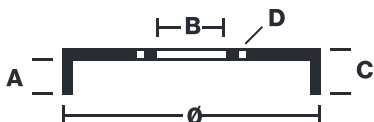
The 14.5609.10 drum is synonymous with reliability

Brembo has developed several design solutions for drum brakes which combine multiple materials to reduce the overall weight. The most popular range of lamellar graphite cast iron drums is supplemented by cast iron drums with a steel sprocket flange and aluminium drums, whereby only the inner part of the drum on which the shoes operate are made of lamellar cast iron, namely the brake band. Additionally drums with built-in bearing kit and hub are added to this range.

- ✓ OE-equivalent
- ✓ Brembo quality
- ✓ Safety
- ✓ Durability



### Technical specifications



EAN code	Axle	Diameter
<b>8020584560914</b>	<b>Rear</b>	<b>228 mm</b>
Width	Height	Number of holes
<b>53,5 mm</b>	<b>72</b>	<b>4</b>
Centering	Max diameter	
<b>63,5 mm</b>	<b>230 mm</b>	

		<b>14.5609.10</b>	
AP	55142		
SRECO	BT 5609		
DIMENSION	228.7 x 53.5 mm		
MAX DIA	229.4 mm		
BALANCING	GUARANTEED		
MATERIAL	SUB-GROUP 1		
WEIGHT	5.1 kg		
DATE : 19/12/2023 VERSION : 00			

COMPATIBLE VEHICLES

## COMPATIBLE OE PART NUMBERS

1490274	FORD
---------	------

---

6063754	FORD
---------	------

---

78EB1126AA	FORD
------------	------

---

D4RY1126A	MERCURY
-----------	---------

---

D5RY1126B	MERCURY
-----------	---------

---