



DRUM

14.7739.10

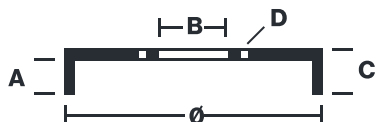
The 14.7739.10 drum is synonymous with reliability

Brembo has developed several design solutions for drum brakes which combine multiple materials to reduce the overall weight. The most popular range of lamellar graphite cast iron drums is supplemented by cast iron drums with a steel sprocket flange and aluminium drums, whereby only the inner part of the drum on which the shoes operate are made of lamellar cast iron, namely the brake band. Additionally drums with built-in bearing kit and hub are added to this range.

- ✓ OE-equivalent
- ✓ Brembo quality
- ✓ Safety
- ✓ Durability



Technical specifications



EAN code	Axle	Diameter
8020584773918	Rear	220 mm
Width	Height	Number of holes
44,5 mm	60	5
Centering	Max diameter	
64 mm	221 mm	

14.7739.10	
AP	55266
BRECO	BT 7739
DIMENSION	220.1 x 44.5 mm
MAX DIA	221 mm
BALANCING	GUARANTEED
MATERIAL	SUB-GROUP 1
WEIGHT	5.7 kg
	90R
	02D01202/59685

DATE : 03/12/2021 VERSION : 00

COMPATIBLE VEHICLES

COMPATIBLE OE PART NUMBERS

42610S70000	HONDA
42610SDAA00	HONDA