



# UPGRADE GT KIT

## 2E4.5001A\_

The 2E4.5001A\_ GT kit is synonymous with superior performance

Complete braking systems, comprising components derived from the world of motorsports and offering unrivalled levels of technology on the market. They feature aluminium radial-mounted fixed calipers, with opposing pistons. Depending on the type of system and the required performance level, the calipers can either be in two-parts, monoblock or even monoblock machined from solid billet metal. The uprated brake discs can be integral (one-piece) or composite, drilled or slotted.



- ✓ Brembo quality
- ✓ Safety
- ✓ Performance
- ✓ Comfort
- ✓ Sports driving
- ✓ Sparty look

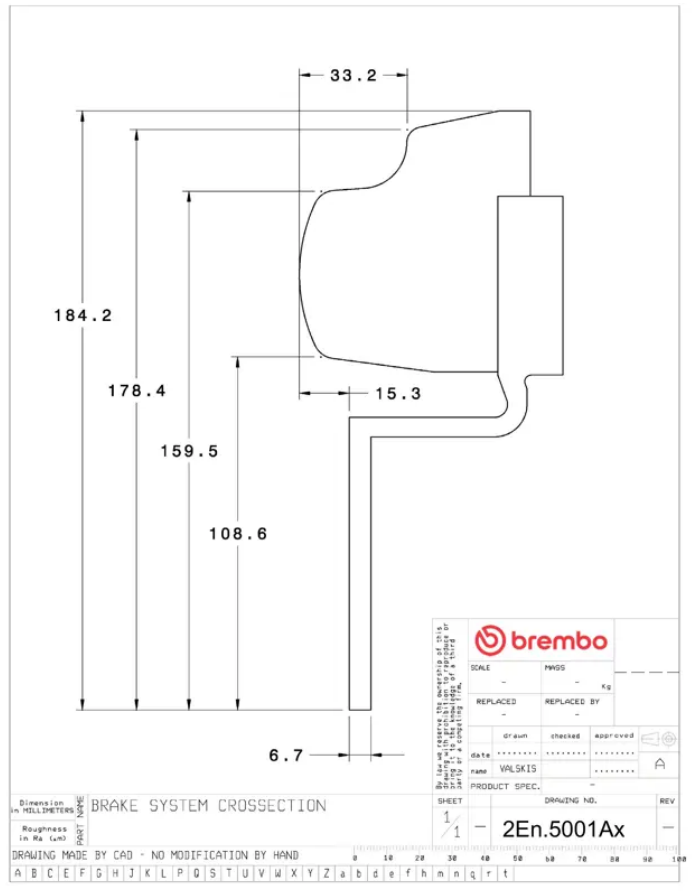
Available in 4 colours

- 2E4.5001A1
- 2E4.5001A2
- 2E4.5001A3
- 2E4.5001A4

## Technical specifications



Axle	Diameter	Thickness (TH)
<b>Rear</b>	<b>316 mm</b>	<b>20 mm</b>
Caliper pistons	Disc type	Caliper type
<b>2</b>	<b>1 piece</b>	<b>2 pieces</b>



**COMPATIBLE VEHICLES**