



# DRUM

## 14.3165.20

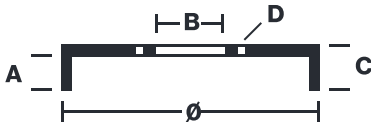
The 14.3165.20 drum is synonymous with reliability

Brembo has developed several design solutions for drum brakes which combine multiple materials to reduce the overall weight. The most popular range of lamellar graphite cast iron drums is supplemented by cast iron drums with a steel sprocket flange and aluminium drums, whereby only the inner part of the drum on which the shoes operate are made of lamellar cast iron, namely the brake band. Additionally drums with built-in bearing kit and hub are added to this range.



- ✓ OE-equivalent
- ✓ Brembo quality
- ✓ Safety
- ✓ Durability

### Technical specifications



EAN code <b>8020584316528</b>	Axle <b>Rear</b>	Diameter <b>250 mm</b>
Width <b>47 mm</b>	Height <b>62,5</b>	Number of holes <b>4</b>
Centering <b>58 mm</b>	Max diameter <b>251 mm</b>	

<b>14.3165.20</b>	
AP	55016
BREGO	BT 4738
DIMENSION	250.1 x 47 mm
MAX DIA	251 mm
BALANCING	GUARANTEED
MATERIAL	SUB-GROUP 1
WEIGHT	4.6 kg
	90R 02D01202/59688

DATE : 28/02/2022 VERSION : 00

### COMPATIBLE VEHICLES

### COMPATIBLE OE PART NUMBERS

34211101787	BMW
34211117047	BMW
34211158712	BMW