



DRUM

14.5102.10

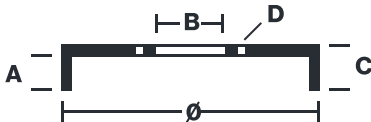
The 14.5102.10 drum is synonymous with reliability

Brembo has developed several design solutions for drum brakes which combine multiple materials to reduce the overall weight. The most popular range of lamellar graphite cast iron drums is supplemented by cast iron drums with a steel sprocket flange and aluminium drums, whereby only the inner part of the drum on which the shoes operate are made of lamellar cast iron, namely the brake band. Additionally drums with built-in bearing kit and hub are added to this range.



- ✓ OE-equivalent
- ✓ Brembo quality
- ✓ Safety
- ✓ Durability

Technical specifications



EAN code **8020584510216** Diameter **228 mm**

Width **48 mm** Height **61 mm** Number of holes **4**

Centering **59 mm** Max diameter **230 mm**

		14.5102.10	
AP	E5114		
BRECO	BT 5102		
DIMENSION	228.5 x 48 mm		
MAX DIA	230 mm		
BALANCING	GUARANTEED		
MATERIAL	SUB-GROUP 1		
WEIGHT	5.7 kg		
	90R		
	02D01202/59686		

DATE : 09/11/2021 VERSION : 00