



DRUM

14.7256.10

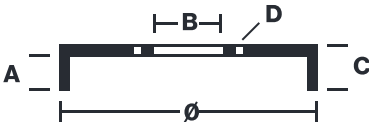
The 14.7256.10 drum is synonymous with reliability

Brembo has developed several design solutions for drum brakes which combine multiple materials to reduce the overall weight. The most popular range of lamellar graphite cast iron drums is supplemented by cast iron drums with a steel sprocket flange and aluminium drums, whereby only the inner part of the drum on which the shoes operate are made of lamellar cast iron, namely the brake band. Additionally drums with built-in bearing kit and hub are added to this range.



- ✓ OE-equivalent
- ✓ Brembo quality
- ✓ Safety
- ✓ Durability

Technical specifications



EAN code 8020584725610	Axle Rear	Diameter 203 mm
Width 50 mm	Height 85,5	Number of holes 4
Centering 54,9 mm	Max diameter 204,5 mm	

14.7256.10	
AP	55227
BRECO	BT 7256
DIMENSION	203.3 x 50 mm
MAX DIA	204.5 mm
BALANCING	GUARANTEED
MATERIAL	SUB-GROUP 1
WEIGHT	5.4 kg

DATE : 19/12/2023 VERSION : 00

COMPATIBLE VEHICLES

COMPATIBLE OE PART NUMBERS

7700840711 RENAULT