



DRUM

14.9383.10

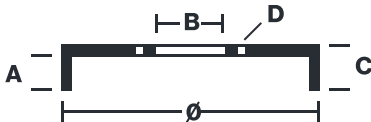
The 14.9383.10 drum is synonymous with reliability

Brembo has developed several design solutions for drum brakes which combine multiple materials to reduce the overall weight. The most popular range of lamellar graphite cast iron drums is supplemented by cast iron drums with a steel sprocket flange and aluminium drums, whereby only the inner part of the drum on which the shoes operate are made of lamellar cast iron, namely the brake band. Additionally drums with built-in bearing kit and hub are added to this range.



- ✓ OE-equivalent
- ✓ Brembo quality
- ✓ Safety
- ✓ Durability

Technical specifications



EAN code 8020584938317	Axle Rear	Diameter 180 mm
Width 41 mm	Height 52,5	Number of holes 4
Centering 65 mm	Max diameter 181,5 mm	

		14.9383.10	
AP	55280		
BRECO	BT 9383		
DIMENSION	180.1 x 41 mm		
MAX DIA	181.5 mm		
BALANCING	GUARANTEED		
MATERIAL	SUB-GROUP 1		
WEIGHT	3.1 kg		
		<small>DATE : 15/06/2021 VERSION : 00</small>	

COMPATIBLE VEHICLES

COMPATIBLE OE PART NUMBERS

6X0609617	SEAT
6X0609617	VW