



DRUM

14.E278.10

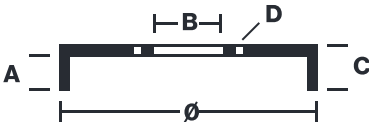
The 14.E278.10 drum is synonymous with reliability

Brembo has developed several design solutions for drum brakes which combine multiple materials to reduce the overall weight. The most popular range of lamellar graphite cast iron drums is supplemented by cast iron drums with a steel sprocket flange and aluminium drums, whereby only the inner part of the drum on which the shoes operate are made of lamellar cast iron, namely the brake band. Additionally drums with built-in bearing kit and hub are added to this range.



- ✓ OE-equivalent
- ✓ Brembo quality
- ✓ Safety
- ✓ Durability

Technical specifications



EAN code	Axle	Diameter
8020584315514	Rear	228,6 mm
Width	Height	Number of holes
47,5 mm	55,9	4
Centering	Max diameter	
65 mm	230 mm	

14.E278.10	
AP	55138
BRECO	BT 1192
DIMENSION	228.6 x 47.5 mm
MAX DIA	230 mm
BALANCING	GUARANTEED
MATERIAL	SUB-GROUP 1
WEIGHT	4.5 kg
	90R
	02D01202/59685

DATE : 20/11/2020 VERSION : 00

COMPATIBLE VEHICLES

COMPATIBLE OE PART NUMBERS

6RU609617A	SKODA
6RU609617A	VW