



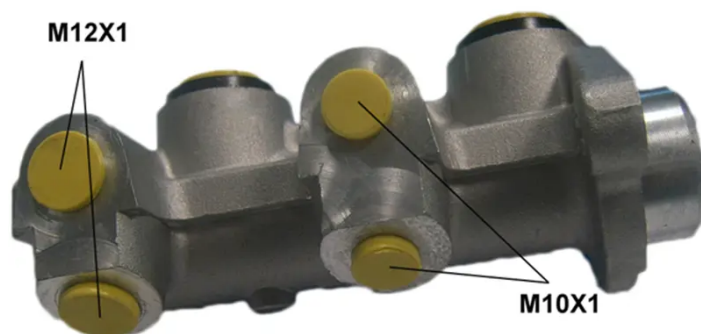
# CLUTCH MASTER CYLINDER

## M 59 031

**The M 59 031 brake master cylinder is synonymous with reliability**

For the braking system to work well, all the components of the brake master cylinder must meet the highest standards of quality and strength. All Brembo brake master cylinders are subjected to complete in-line checks which guarantee conformity to the strictest standards.

- ✓ OE-equivalent
- ✓ Brembo quality
- ✓ Safety
- ✓ Durability
- ✓ Durability test
- ✓ Tightness test
- ✓ Burst test



### Technical specifications

EAN code	Axle	Diameter
8432509611012		20,64 mm
Threading	Braking system	Material
10 x 1 (2), 12 x 1 (2)	DELCO	Aluminium

### COMPATIBLE OE PART NUMBERS

558102	OPEL
3492467	VAUXHALL