



# UPGRADE GT KIT

## 1B1.8021A\_




The 1B1.8021A\_ GT kit is synonymous with superior performance

Complete braking systems, comprising components derived from the world of motorsports and offering unrivalled levels of technology on the market. They feature aluminium radial-mounted fixed calipers, with opposing pistons. Depending on the type of system and the required performance level, the calipers can either be in two-parts, monoblock or even monoblock machined from solid billet metal. The uprated brake discs can be integral (one-piece) or composite, drilled or slotted.



- ✓ Brembo quality
- ✓ Safety
- ✓ Performance
- ✓ Comfort
- ✓ Sports driving
- ✓ Sparty look

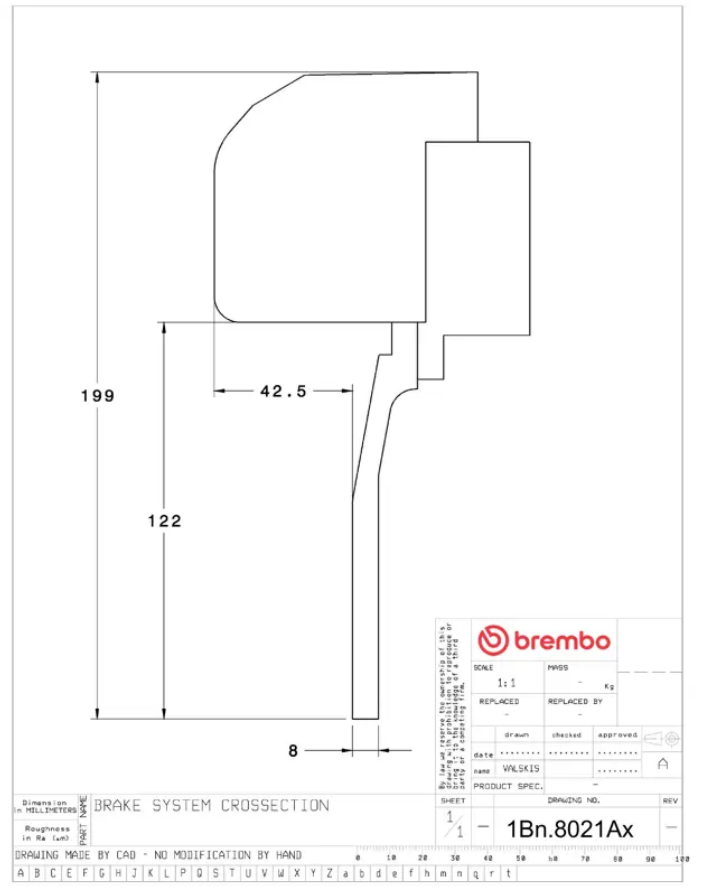
Available in 3 colours

 1B1.8021A1  1B1.8021A2  1B1.8021A3

## Technical specifications



Axle	Diameter	Thickness (TH)
Front	<b>355 mm</b>	<b>32 mm</b>
Caliper pistons	Disc type	Caliper type
<b>4</b>	<b>2 pieces</b>	<b>2 pieces</b>



Dimension in MILLIMETERS	BRAKE SYSTEM CROSSECTION		SHEET	1	1																									
Roughness in Ra (µm)	DRAWING MADE BY CAD - NO MODIFICATION BY HAND		1Bn.8021Ax																											
	A	B	C	E	F	G	H	J	K	L	P	S	T	U	V	W	X	Y	Z	a	b	d	e	f	h	m	n	q	r	t

**COMPATIBLE VEHICLES**