



# UPGRADE GT KIT

## 1B2.8028A\_


The 1B2.8028A\_ GT kit is synonymous with superior performance

Complete braking systems, comprising components derived from the world of motorsports and offering unrivalled levels of technology on the market. They feature aluminium radial-mounted fixed calipers, with opposing pistons. Depending on the type of system and the required performance level, the calipers can either be in two-parts, monoblock or even monoblock machined from solid billet metal. The uprated brake discs can be integral (one-piece) or composite, drilled or slotted.



- ✓ Brembo quality
- ✓ Safety
- ✓ Performance
- ✓ Comfort
- ✓ Sports driving
- ✓ Sparty look

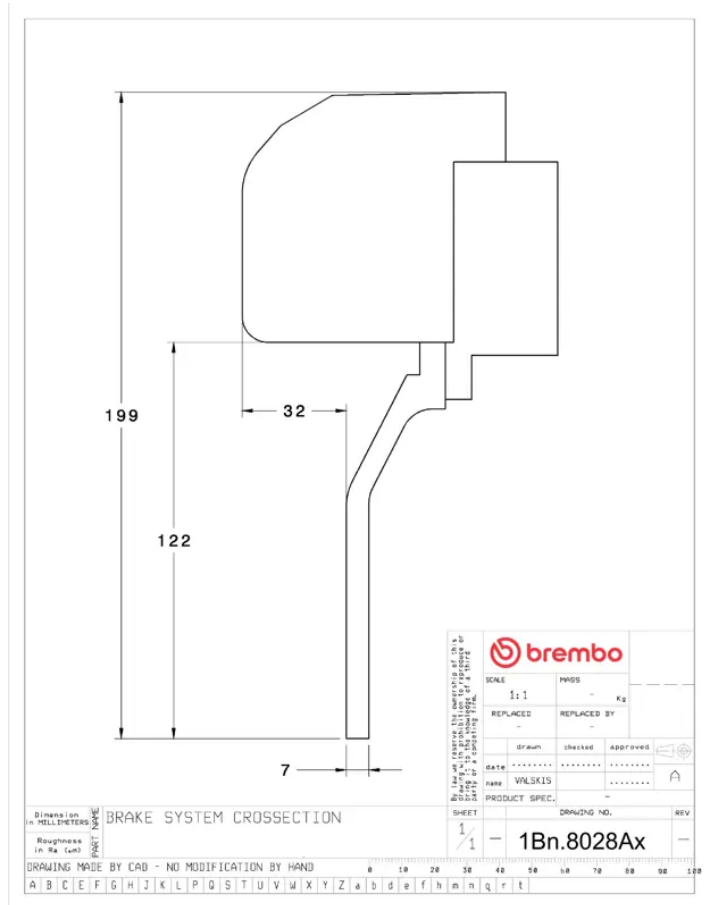
Available in 3 colours

 1B2.8028A1    1B2.8028A2    1B2.8028A3

## Technical specifications



Axle	Diameter	Thickness (TH)
Front	<b>355 mm</b>	<b>32 mm</b>
Caliper pistons	Disc type	Caliper type
<b>4</b>	<b>2 pieces</b>	<b>2 pieces</b>



		SCALE	MM/IN
		1:1	- Kg
REPLACED	REPLACED BY		
DATE	DESIGNED	APPROVED	
NAME	WLSKIS		
PRODUCT SPEC.			
SHEET	1	DRAWING NO.	REV
1		1Bn.8028Ax	

Dimension in MILLIMETERS  
Roughness in Ra (µm)

DRIVE SYSTEM CROSS SECTION

DRAWING MADE BY CAD - NO MODIFICATION BY HAND

A B C D E F G H I J K L P Q R S T U V W X Y Z a b c d e f h i n q r t

COMPATIBLE VEHICLES