



DRUM

14.7126.20

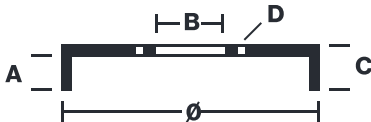
The 14.7126.20 drum is synonymous with reliability

Brembo has developed several design solutions for drum brakes which combine multiple materials to reduce the overall weight. The most popular range of lamellar graphite cast iron drums is supplemented by cast iron drums with a steel sprocket flange and aluminium drums, whereby only the inner part of the drum on which the shoes operate are made of lamellar cast iron, namely the brake band. Additionally drums with built-in bearing kit and hub are added to this range.

- ✓ OE-equivalent
- ✓ Brembo quality
- ✓ Safety
- ✓ Durability



Technical specifications



EAN code
8020584712627

Axle
Rear

Diameter
203 mm

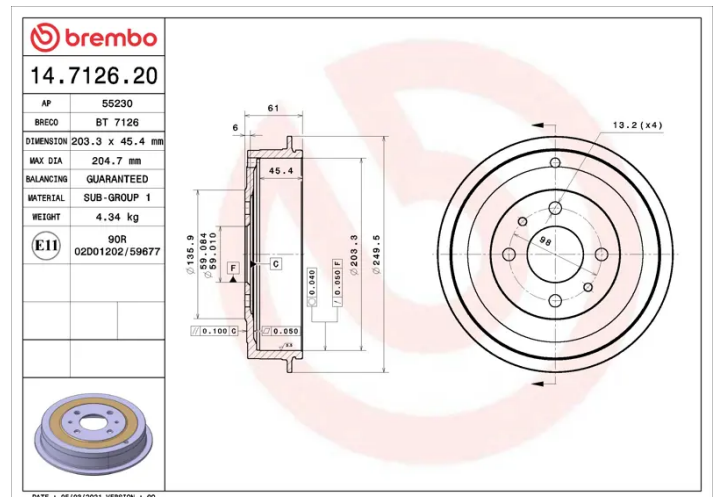
Width
48,5 mm

Height
61

Number of holes
4

Centering
59 mm

Max diameter
204,7 mm



COMPATIBLE VEHICLES

COMPATIBLE OE PART NUMBERS

51822458	ALFA ROMEO
51916180	ALFA ROMEO
51945971	ALFA ROMEO
7774593	ALFA ROMEO
51904079	CHRYSLER
51822458	FIAT
51916180	FIAT
51945971	FIAT
7774593	FIAT
7774593	LANCIA