



# DRUM

## 14.4976.10

**The 14.4976.10 drum is synonymous with reliability**

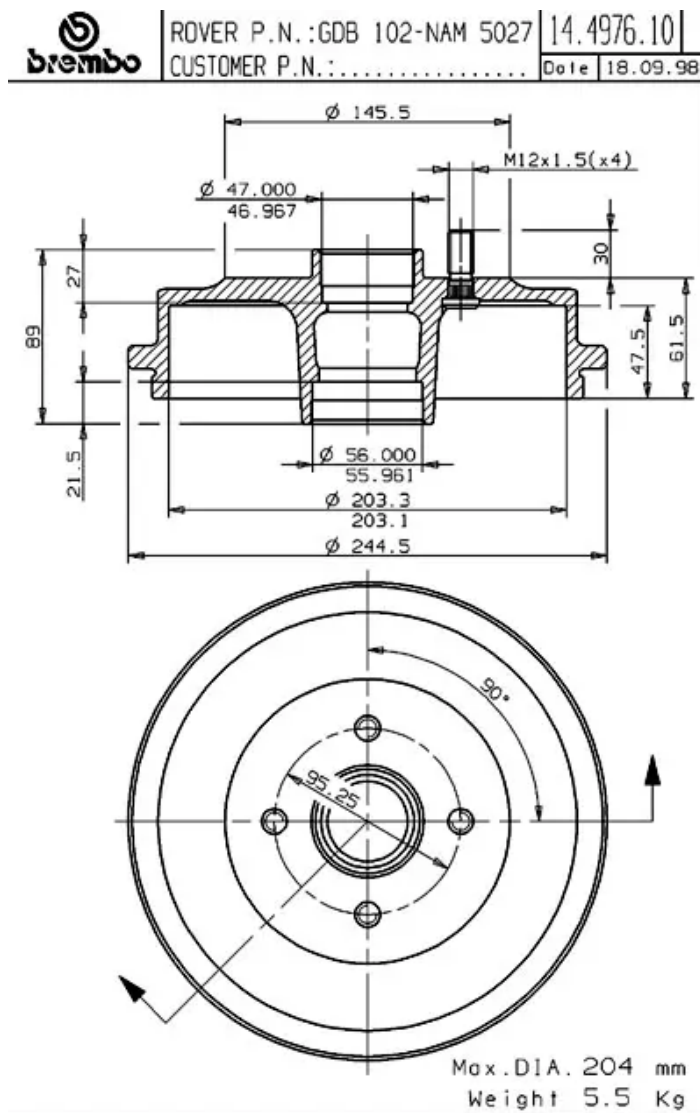
Brembo has developed several design solutions for drum brakes which combine multiple materials to reduce the overall weight. The most popular range of lamellar graphite cast iron drums is supplemented by cast iron drums with a steel sprocket flange and aluminium drums, whereby only the inner part of the drum on which the shoes operate are made of lamellar cast iron, namely the brake band. Additionally drums with built-in bearing kit and hub are added to this range.

- ✓ OE-equivalent
- ✓ Brembo quality
- ✓ Safety
- ✓ Durability



A schematic diagram of a rectangular frame. The frame has a total width of  $\varnothing$  and a total height of  $A$ . The top horizontal member has a thickness of  $D$ . The distance between the inner vertical members is  $B$ . The right vertical member has a height of  $C$ . The frame is shown in a cross-sectional view.

Max diameter  
**204** mm



## COMPATIBLE OE PART NUMBERS

GDB102110	AUSTIN
NAM50277758	AUSTIN
GDB102	ROVER
GDB110	ROVER