



# DRUM

## 14.7756.10

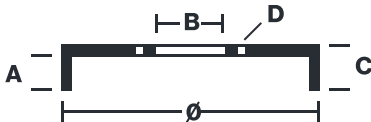
The 14.7756.10 drum is synonymous with reliability

Brembo has developed several design solutions for drum brakes which combine multiple materials to reduce the overall weight. The most popular range of lamellar graphite cast iron drums is supplemented by cast iron drums with a steel sprocket flange and aluminium drums, whereby only the inner part of the drum on which the shoes operate are made of lamellar cast iron, namely the brake band. Additionally drums with built-in bearing kit and hub are added to this range.



- ✓ OE-equivalent
- ✓ Brembo quality
- ✓ Safety
- ✓ Durability

### Technical specifications



EAN code <b>8020584775615</b>	Axle <b>Rear</b>	Diameter <b>180 mm</b>
Width <b>49 mm</b>	Height <b>57,5</b>	Number of holes <b>5</b>
Centering <b>67 mm</b>	Max diameter <b>181,2 mm</b>	

		<b>14.7756.10</b>	
AP	55268		
BREGO	BT 7756		
DIMENSION	180.1 x 49 mm		
MAX DIA	181.2 mm		
BALANCING	GUARANTEED		
MATERIAL	SUB-GROUP 1		
WEIGHT	2.9 kg		
E11	90R 02D01202/59678		
<small>DATE : 14/06/2021 VERSION : 00</small>			

## COMPATIBLE VEHICLES

## COMPATIBLE OE PART NUMBERS

1684230201	MERCEDES-BENZ
1684230401	MERCEDES-BENZ