



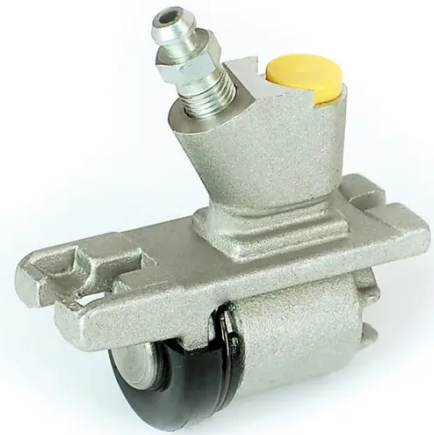
# BRAKE WHEEL CYLINDER

## A 12 914

The A 12 914 brake wheel cylinder is synonymous with reliability

Brembo brake wheel cylinders are subjected to checks during the entire production process to guarantee their conformity to the strictest standards. Tightness, durability and burst tests are conducted to guarantee the reliability of the product in the most critical conditions of use.

- ✓ OE-equivalent
- ✓ Brembo quality
- ✓ Safety
- ✓ Durability
- ✓ Durability test
- ✓ Tightness test
- ✓ Burst test



### Technical specifications

EAN code	Axle	Diameter
8432509630716	Rear	15,87 mm
Threading	Braking system	Material
3/8 24 UNF	TRW	Aluminium

COMPATIBLE VEHICLES

### COMPATIBLE OE PART NUMBERS

GWC1202	MORRIS
SML001202EVA	MORRIS
GWC1202	TRIUMPH
SML001202EVA	TRIUMPH