



DRUM

14.4970.10

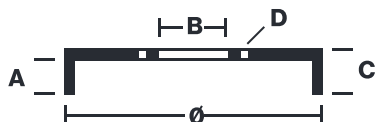
The 14.4970.10 drum is synonymous with reliability

Brembo has developed several design solutions for drum brakes which combine multiple materials to reduce the overall weight. The most popular range of lamellar graphite cast iron drums is supplemented by cast iron drums with a steel sprocket flange and aluminium drums, whereby only the inner part of the drum on which the shoes operate are made of lamellar cast iron, namely the brake band. Additionally drums with built-in bearing kit and hub are added to this range.



- ✓ OE-equivalent
- ✓ Brembo quality
- ✓ Safety
- ✓ Durability

Technical specifications



EAN code 8020584497012	Axle Rear	Diameter 200 mm
Width 47 mm	Height 66,5	Number of holes 4
Centering 54 mm	Max diameter 201 mm	

14.4970.10	
AP	55091
BRECO	BT 4970
DIMENSION	200,1 x 47 mm
MAX DIA	201 mm
BALANCING	GUARANTEED
MATERIAL	SUB-GROUP 1
WEIGHT	4,5 kg
	90R 02D01202/59684

DATE : 18/02/2021 VERSION : 00

COMPATIBLE VEHICLES

COMPATIBLE OE PART NUMBERS

94840385	CHEVROLET
4243120070	TOYOTA