



DRUM

14.7739.10

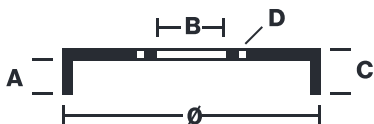
The 14.7739.10 drum is synonymous with reliability

Brembo has developed several design solutions for drum brakes which combine multiple materials to reduce the overall weight. The most popular range of lamellar graphite cast iron drums is supplemented by cast iron drums with a steel sprocket flange and aluminium drums, whereby only the inner part of the drum on which the shoes operate are made of lamellar cast iron, namely the brake band. Additionally drums with built-in bearing kit and hub are added to this range.

- ✓ OE-equivalent
- ✓ Brembo quality
- ✓ Safety
- ✓ Durability



Technical specifications



EAN code 8020584773918	Axle Rear	Diameter 220 mm
Width 44,5 mm	Height 60	Number of holes 5
Centering 64 mm	Max diameter 221 mm	

		14.7739.10	
AP	55266		
BREGO	BT 7739		
DIMENSION	220.1 x 44.5 mm		
MAX DIA	221 mm		
BALANCING	GUARANTEED		
MATERIAL	SUB-GROUP 1		
WEIGHT	5.7 kg		
E11	90R 02D01202/59685		
<small>DATE : 03/12/2021 VERSION : 00</small>			

COMPATIBLE VEHICLES

COMPATIBLE OE PART NUMBERS

42610S70000	HONDA
42610SDAA00	HONDA