



UPGRADE GT KIT

1B2.8047A_




The 1B2.8047A_ GT kit is synonymous with superior performance

Complete braking systems, comprising components derived from the world of motorsports and offering unrivalled levels of technology on the market. They feature aluminium radial-mounted fixed calipers, with opposing pistons. Depending on the type of system and the required performance level, the calipers can either be in two-parts, monoblock or even monoblock machined from solid billet metal. The uprated brake discs can be integral (one-piece) or composite, drilled or slotted.

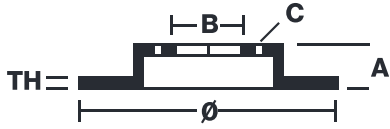


- ✓ Brembo quality
- ✓ Safety
- ✓ Performance
- ✓ Comfort
- ✓ Sports driving
- ✓ Sparty look

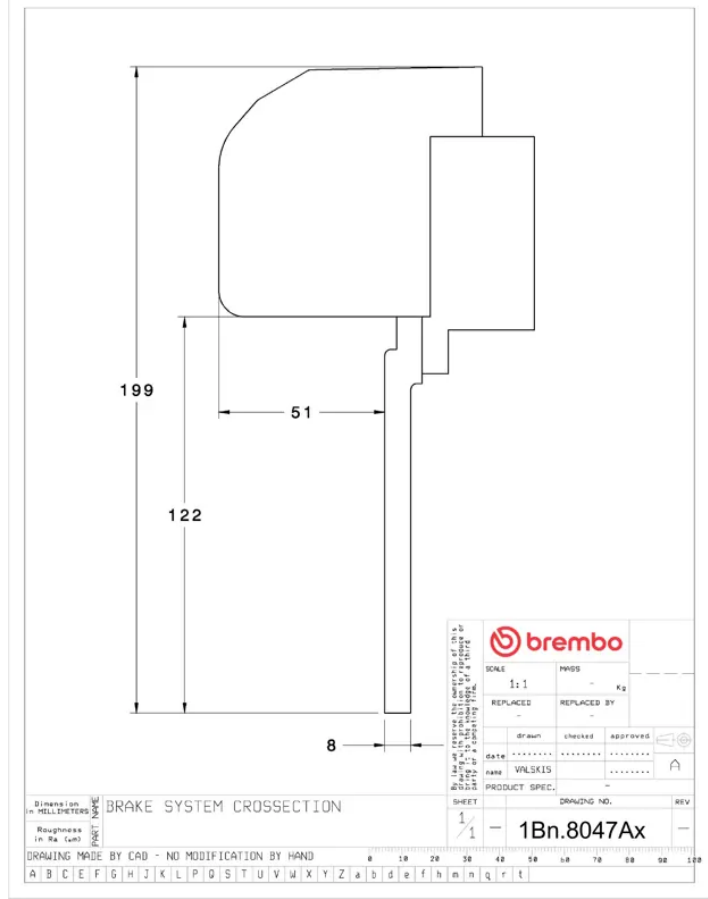
Available in 3 colours

 1B2.8047A1  1B2.8047A2  1B2.8047A3

Technical specifications



| | | |
|-----------------|-----------------|-----------------|
| Axle | Diameter | Thickness (TH) |
| Front | 355 mm | 32 mm |
| Caliper pistons | Disc type | Caliper type |
| 4 | 2 pieces | 2 pieces |



| | | | | | | |
|---------------|---------|-------------|------------|-------------|---|----|
| | | SCALE | 1:1 | MMDS | - | Kg |
| | | REPLACED | - | REPLACED BY | - | - |
| drawn | checked | approved | | | | |
| date | WLSKIS | | | | | |
| name | WLSKIS | | | | | |
| PRODUCT SPEC. | | | | | | |
| SHEET | 1 | DRAWING NO. | 1Bn.8047Ax | | | |
| REV | | | | | | |

Dimension in MILLIMETERS
 Roughness in Ra (µm)
 DRAWING MADE BY CAD - NO MODIFICATION BY HAND
 0 10 20 30 40 50 60 70 80 90 100
 A B C E F G H J K L P O S T U V W X Y Z a b d e f h n n q r t