



# DRUM

## 14.3174.10

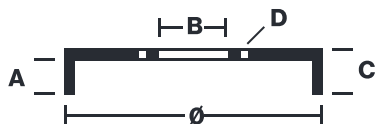
The 14.3174.10 drum is synonymous with reliability

Brembo has developed several design solutions for drum brakes which combine multiple materials to reduce the overall weight. The most popular range of lamellar graphite cast iron drums is supplemented by cast iron drums with a steel sprocket flange and aluminium drums, whereby only the inner part of the drum on which the shoes operate are made of lamellar cast iron, namely the brake band. Additionally drums with built-in bearing kit and hub are added to this range.

- ✓ OE-equivalent
- ✓ Brembo quality
- ✓ Safety
- ✓ Durability



### Technical specifications



EAN code	Axle	Diameter
8020584317419	Rear	180 mm
Width	Height	Number of holes
43 mm	72	4
Centering	Max diameter	
52 mm	181 mm	

<b>14.3174.10</b>	
AP	55022
BREGO	BT 3174
DIMENSION	180.1 x 43 mm
MAX DIA	181
BALANCING	GUARANTEED
MATERIAL	SUB-GROUP 1
WEIGHT	3.8 Kg

DATE : 19/12/2023 VERSION : 00

COMPATIBLE VEHICLES

## COMPATIBLE OE PART NUMBERS

42610634010

HONDA