



# DRUM

## 14.3252.10

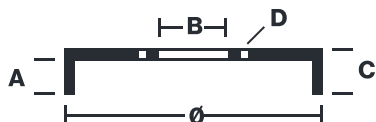
The 14.3252.10 drum is synonymous with reliability

Brembo has developed several design solutions for drum brakes which combine multiple materials to reduce the overall weight. The most popular range of lamellar graphite cast iron drums is supplemented by cast iron drums with a steel sprocket flange and aluminium drums, whereby only the inner part of the drum on which the shoes operate are made of lamellar cast iron, namely the brake band. Additionally drums with built-in bearing kit and hub are added to this range.



- ✓ OE-equivalent
- ✓ Brembo quality
- ✓ Safety
- ✓ Durability

### Technical specifications



EAN code	Diameter	
<b>8020584325216</b>	<b>252 mm</b>	
Width	Height	Number of holes
<b>65,5 mm</b>	<b>83</b>	<b>5</b>
Centering	Max diameter	
<b>93 mm</b>	<b>253,5 mm</b>	

<b>14.3252.10</b>	
AP	55046
BRECO	BT 3252
DIMENSION	252.1 x 65.5 mm
MAX DIA	253.5 mm
BALANCING	GUARANTEED
MATERIAL	SUB-GROUP 1
WEIGHT	7.3 kg

DATE : 16/02/2022 VERSION : 00

## COMPATIBLE OE PART NUMBERS