



# DRUM

## 14.7008.10

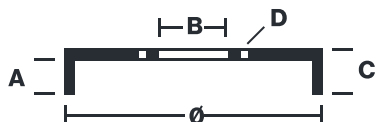
The 14.7008.10 drum is synonymous with reliability

Brembo has developed several design solutions for drum brakes which combine multiple materials to reduce the overall weight. The most popular range of lamellar graphite cast iron drums is supplemented by cast iron drums with a steel sprocket flange and aluminium drums, whereby only the inner part of the drum on which the shoes operate are made of lamellar cast iron, namely the brake band. Additionally drums with built-in bearing kit and hub are added to this range.

- ✓ OE-equivalent
- ✓ Brembo quality
- ✓ Safety
- ✓ Durability



### Technical specifications



EAN code	Axle	Diameter
8020584700815	Rear	203 mm
Width	Height	Number of holes
49 mm	80	4
Centering	Max diameter	
50,3 mm	204 mm	

<b>14.7008.10</b>	
AP	55203
SRECO	BT 7008
DIMENSION	203,1 x 49 mm
MAX DIA	204 mm
BALANCING	GUARANTEED
MATERIAL	SUB-GROUP 1
WEIGHT	5,6 Kg

DATE : 07/02/2023 VERSION : 00

COMPATIBLE VEHICLES

## COMPATIBLE OE PART NUMBERS

6560028	FORD
---------	------

---

6920711	FORD
---------	------

---

91AB1113AC	FORD
------------	------

---

91AB1113AD	FORD
------------	------

---