



DRUM

14.7127.20

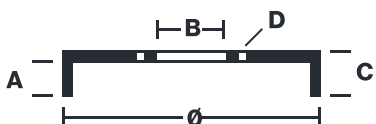
The 14.7127.20 drum is synonymous with reliability

Brembo has developed several design solutions for drum brakes which combine multiple materials to reduce the overall weight. The most popular range of lamellar graphite cast iron drums is supplemented by cast iron drums with a steel sprocket flange and aluminium drums, whereby only the inner part of the drum on which the shoes operate are made of lamellar cast iron, namely the brake band. Additionally drums with built-in bearing kit and hub are added to this range.



- ✓ OE-equivalent
- ✓ Brembo quality
- ✓ Safety
- ✓ Durability

Technical specifications



EAN code 8020584712726	Axle Rear	Diameter 228 mm
Width 48 mm	Height 61	Number of holes 4
Centering 59 mm	Max diameter 230 mm	

14.7127.20	
AP	55265
BRECO	BT 7127
DIMENSION	228.5 x 47.4 mm
MAX DIA	230 mm
BALANCING	GUARANTEED
MATERIAL	SUB-GROUP 1
WEIGHT	5.7 kg
	90R
	02D01202/59679

COMPATIBLE VEHICLES

COMPATIBLE OE PART NUMBERS

60810025 ALFA ROMEO

7569600 ALFA ROMEO

424755 CITROËN

424758 CITROËN

51816526 FIAT

51903659 FIAT

52015299 FIAT

60810025 FIAT

60814839 FIAT

7569600 FIAT

7769850 FIAT

7769850 LANCIA

424755 PEUGEOT

424758 PEUGEOT
