



DRUM

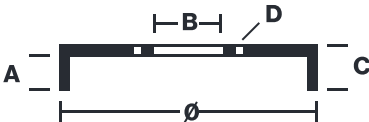
14.A237.10

The 14.A237.10 drum is synonymous with reliability

Brembo has developed several design solutions for drum brakes which combine multiple materials to reduce the overall weight. The most popular range of lamellar graphite cast iron drums is supplemented by cast iron drums with a steel sprocket flange and aluminium drums, whereby only the inner part of the drum on which the shoes operate are made of lamellar cast iron, namely the brake band. Additionally drums with built-in bearing kit and hub are added to this range.

- ✓ OE-equivalent
- ✓ Brembo quality
- ✓ Safety
- ✓ Durability

Technical specifications



EAN code	Axle	Diameter
8020584017913	Rear	180 mm
Width	Height	Number of holes
33,5 mm	46,7	4
Centering	Max diameter	
55 mm	181 mm	

14.A237.10	
AP	55296
BRECO	BT 1237
DIMENSION	180.1 x 33.5 mm
MAX DIA	181 mm
BALANCING	GUARANTEED
MATERIAL	SUB-GROUP 1
WEIGHT	3 kg
<small>DATE : 18/05/2021 VERSION : 00</small>	

COMPATIBLE VEHICLES

COMPATIBLE OE PART NUMBERS

42431B1020	DAIHATSU
------------	----------

42431B1020000	DAIHATSU
---------------	----------

42431B1020000	PERODUA
---------------	---------

42431B1020	SUBARU
------------	--------

42431B1020	TOYOTA
------------	--------
