



# **BRAKE PAD XTRA CERAMIC P83117NX**

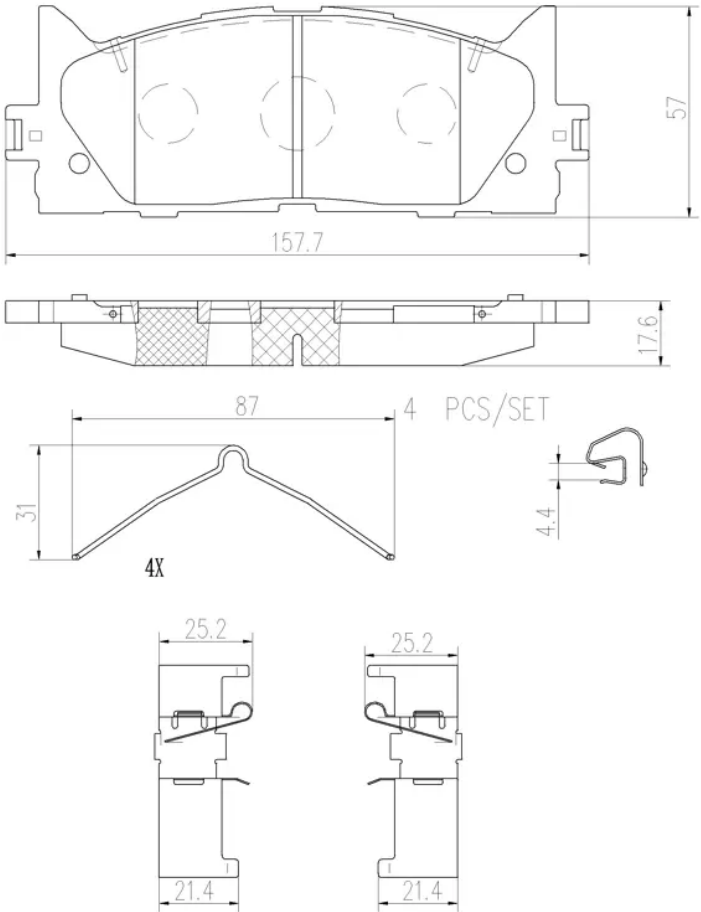
## **Xtra Ceramic brake pad P83117NX belongs to Brembo Cool Line**

Brembo Xtra Ceramic brake pads have a specific compound which, beside being copper free, also contains less metal compared to Xtra pads. This feature make Xtra Ceramic more focused on comfort and cleaner rims, thanks to the ceramic friction material, while guaranteeing the top performance proper of the Xtra line. Xtra Ceramic range is fully ECE R90 homologated.

- ✓ OE-equivalent
- ✓ Brembo quality
- ✓ ECE-R90 certificate
- ✓ Safety
- ✓ Performance
- ✓ Dust reduction
- ✓ Comfort

Technical specifications

EAN code	Axle	Thickness
8020584131121	Front	18 mm
Width	Height	Braking system
158 mm	57 mm	Akebono
Wear indicator	WVA number	Accessories
Without	24350	With anti-squeal shim



COMPATIBLE VEHICLES

COMPATIBLE OE PART NUMBERS

0446506070	TOYOTA
0446506080	TOYOTA
0446506100	TOYOTA
0446506110	TOYOTA
0446506130	TOYOTA
0446506131	TOYOTA
0446506140	TOYOTA
0446507010	TOYOTA
0446507020	TOYOTA
0446533440	TOYOTA
0446533450	TOYOTA
0446533470	TOYOTA
0446533471	TOYOTA
04465YZZEG	TOYOTA