



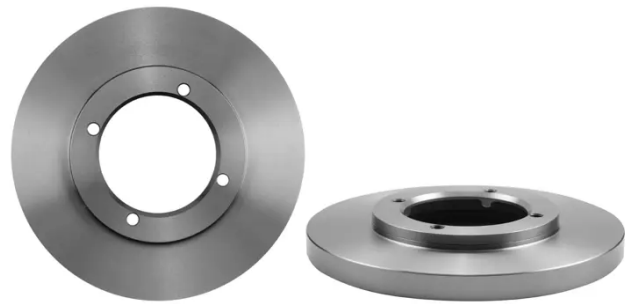
BRAKE DISC

08.A122.10

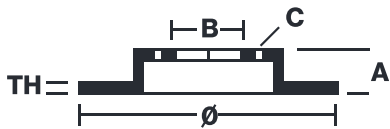
The **08.A122.10** brake disc is synonymous with reliability

The Brembo brake disc is fully interchangeable with an Original Equipment brake disc. The control of the entire production cycle allows Brembo to offer brake discs with outstanding performance levels, reliability, durability and comfort in all conditions of use. All Brembo brake discs are accompanied by the ECE-R90 homologation.

- ✓ OE-equivalent
- ✓ Brembo quality
- ✓ ECE-R90 certificate
- ✓ Safety



Technical specifications



EAN code 8020584018828	Axle Front	Diameter Ø 233 mm
Thickness (TH) 18 mm	Height (A) 30 mm	Number of holes (C) 4
Brake disc type Solid	Centering (B) 91 mm	Min. thickness 17 mm

		08.A122.10	
DIMENSION	233 x 18 mm		
MIN TH	17 mm		
BALANCING	GUARANTEED		
MATERIAL	SUB-GROUP 1		
WEIGHT	4.3 kg		
E11	90R 02C01202/25292		
<small>DATE : 11/04/2016 VERSION : 01</small>			

COMPATIBLE VEHICLES

COMPATIBLE OE PART NUMBERS

43512BZ020	DAIHATSU
43512BZ180	DAIHATSU
43512BZ020	TOYOTA
43512BZ180	TOYOTA