



DRUM

14.4722.10

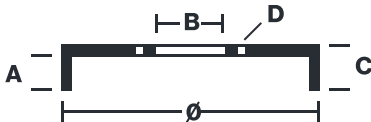
The 14.4722.10 drum is synonymous with reliability

Brembo has developed several design solutions for drum brakes which combine multiple materials to reduce the overall weight. The most popular range of lamellar graphite cast iron drums is supplemented by cast iron drums with a steel sprocket flange and aluminium drums, whereby only the inner part of the drum on which the shoes operate are made of lamellar cast iron, namely the brake band. Additionally drums with built-in bearing kit and hub are added to this range.

- ✓ OE-equivalent
- ✓ Brembo quality
- ✓ Safety
- ✓ Durability



Technical specifications



EAN code	Axle	Diameter
8020584472217	Rear	230 mm
Width	Height	Number of holes
58,5 mm	76	4
Centering	Max diameter	
57 mm	230,9 mm	

		14.4722.10	
AP	55071		
SRECO	BT 4722		
DIMENSION	230.1 x 58.75 mm		
MAX DIA	230.9 mm		
BALANCING	GUARANTEED		
MATERIAL	SUB-GROUP 1		
WEIGHT	5.1 kg		
DATE : 28/03/2023 VERSION : 00			

COMPATIBLE VEHICLES

COMPATIBLE OE PART NUMBERS

90077721 BEDFORD

0568056 OPEL

568038 OPEL

568051 OPEL

568056 OPEL

90077721 OPEL

90135264 OPEL

90077721 VAUXHALL

90135264 VAUXHALL
