



DRUM

14.4980.10

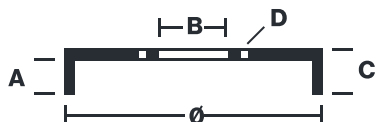
The 14.4980.10 drum is synonymous with reliability

Brembo has developed several design solutions for drum brakes which combine multiple materials to reduce the overall weight. The most popular range of lamellar graphite cast iron drums is supplemented by cast iron drums with a steel sprocket flange and aluminium drums, whereby only the inner part of the drum on which the shoes operate are made of lamellar cast iron, namely the brake band. Additionally drums with built-in bearing kit and hub are added to this range.



- ✓ OE-equivalent
- ✓ Brembo quality
- ✓ Safety
- ✓ Durability

Technical specifications



EAN code 8020584498019	Axle Rear	Diameter 180 mm
Width 43 mm	Height 73	Number of holes 4
Centering 52 mm	Max diameter 181 mm	

		14.4980.10	
AP	55095		
SRECO	BT 4980		
DIMENSION	180.1 x 44 mm		
MAX DIA	181 mm		
BALANCING	GUARANTEED		
MATERIAL	SUB-GROUP 1		
WEIGHT	4.6 kg		
	90R		
	02D01202/59681		
<small>DATE : 25/05/2021 VERSION : 00</small>			

COMPATIBLE VEHICLES

COMPATIBLE OE PART NUMBERS

95637178	CITROËN
424725	PEUGEOT
424731	PEUGEOT