



# DRUM

## 14.5826.10

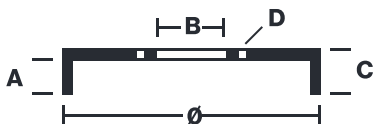
The 14.5826.10 drum is synonymous with reliability

Brembo has developed several design solutions for drum brakes which combine multiple materials to reduce the overall weight. The most popular range of lamellar graphite cast iron drums is supplemented by cast iron drums with a steel sprocket flange and aluminium drums, whereby only the inner part of the drum on which the shoes operate are made of lamellar cast iron, namely the brake band. Additionally drums with built-in bearing kit and hub are added to this range.

- ✓ OE-equivalent
- ✓ Brembo quality
- ✓ Safety
- ✓ Durability



### Technical specifications



EAN code	Axle	Diameter
<b>8020584582619</b>	<b>Rear</b>	<b>200 mm</b>
Width	Height	Number of holes
<b>49,5 mm</b>	<b>81</b>	<b>4</b>
Centering	Max diameter	
<b>39,9 mm</b>	<b>201 mm</b>	

		<b>14.5826.10</b>	
AP	55160		
SRECO	BT 5826		
DIMENSION	200.1 x 49.8 mm		
MAX DIA	201 mm		
BALANCING	GUARANTEED		
MATERIAL	SUB-GROUP 1		
WEIGHT	5.3 kg		
DATE : 07/11/2022 VERSION : 00			

COMPATIBLE VEHICLES

## COMPATIBLE OE PART NUMBERS

1H0501615A	SEAT
------------	------

115330192	SKODA
-----------	-------

6U0501615	SKODA
-----------	-------

6U0501615A	SKODA
------------	-------

6U0501615B	SKODA
------------	-------

1H0501615A	VW
------------	----

1H0501615B	VW
------------	----

323501615	VW
-----------	----

379501615A	VW
------------	----

6U0501615B	VW
------------	----