



DRUM

14.5602.10

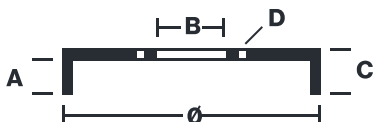
The 14.5602.10 drum is synonymous with reliability

Brembo has developed several design solutions for drum brakes which combine multiple materials to reduce the overall weight. The most popular range of lamellar graphite cast iron drums is supplemented by cast iron drums with a steel sprocket flange and aluminium drums, whereby only the inner part of the drum on which the shoes operate are made of lamellar cast iron, namely the brake band. Additionally drums with built-in bearing kit and hub are added to this range.

- ✓ OE-equivalent
- ✓ Brembo quality
- ✓ Safety
- ✓ Durability



Technical specifications



EAN code	Axle	Diameter
8020584560211	Rear	230 mm
Width	Height	Number of holes
52 mm	90	4
Centering	Max diameter	
45,2 mm	231 mm	

		14.5602.10	
AP	55135		
BREGO	BT 5602		
DIMENSION	230 x 52 mm		
MAX DIA	231 mm		
BALANCING	GUARANTEED		
MATERIAL	SUB-GROUP 1		
WEIGHT	6.45 kg		
		<small>DATE : 19/12/2023 VERSION : 00</small>	

COMPATIBLE VEHICLES

COMPATIBLE OE PART NUMBERS

147501615A VW