



DRUM

14.6757.10

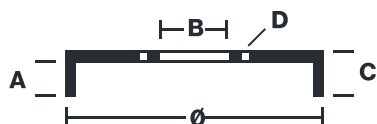
The 14.6757.10 drum is synonymous with reliability

Brembo has developed several design solutions for drum brakes which combine multiple materials to reduce the overall weight. The most popular range of lamellar graphite cast iron drums is supplemented by cast iron drums with a steel sprocket flange and aluminium drums, whereby only the inner part of the drum on which the shoes operate are made of lamellar cast iron, namely the brake band. Additionally drums with built-in bearing kit and hub are added to this range.

- ✓ OE-equivalent
- ✓ Brembo quality
- ✓ Safety
- ✓ Durability



Technical specifications



EAN code
8020584675717

Axle
Rear

Diameter
295 mm

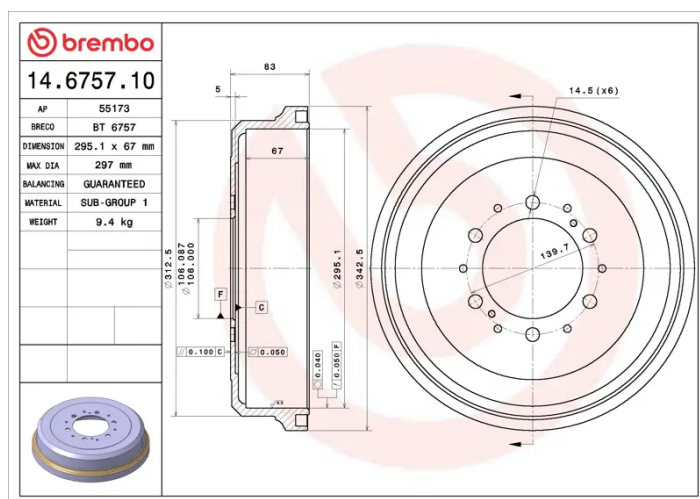
Width
67 mm

Height
83

Number of holes
6

Centering
106 mm

Max diameter
297 mm



COMPATIBLE VEHICLES

COMPATIBLE OE PART NUMBERS

4243104020	TOYOTA
4243104030	TOYOTA
4243134020	TOYOTA
4243134021	TOYOTA
4243135110	TOYOTA
4243135180	TOYOTA
4243135200	TOYOTA
4243135210	TOYOTA
J4243135180	VW
J4243135200	VW