



# DRUM

## 14.7098.20

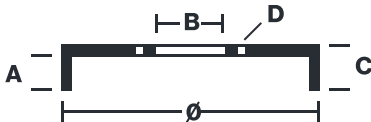
The 14.7098.20 drum is synonymous with reliability

Brembo has developed several design solutions for drum brakes which combine multiple materials to reduce the overall weight. The most popular range of lamellar graphite cast iron drums is supplemented by cast iron drums with a steel sprocket flange and aluminium drums, whereby only the inner part of the drum on which the shoes operate are made of lamellar cast iron, namely the brake band. Additionally drums with built-in bearing kit and hub are added to this range.



- ✓ OE-equivalent
- ✓ Brembo quality
- ✓ Safety
- ✓ Durability

### Technical specifications



EAN code	Axle	Diameter
<b>8020584709825</b>	<b>Rear</b>	<b>254 mm</b>
Width	Height	Number of holes
<b>57,5 mm</b>	<b>97,5</b>	<b>5</b>
Centering	Max diameter	
<b>131,3 mm</b>	<b>256 mm</b>	

<b>14.7098.20</b>	
AP	55305
BRECO	BT 4746
DIMENSION	254.1 x 60.2 mm
MAX DIA	256 mm
BALANCING	GUARANTEED
MATERIAL	SUB-GROUP 1
WEIGHT	9.5 kg

DATE : 23/02/2022 VERSION : 00

COMPATIBLE VEHICLES

## COMPATIBLE OE PART NUMBERS

1C1W1126AB	FORD
------------	------

---

1C1W1126AD	FORD
------------	------

---

1C1W1126AE	FORD
------------	------

---

2313908	FORD
---------	------

---

4095023	FORD
---------	------

---

4146930	FORD
---------	------

---

4540218	FORD
---------	------

---

ME1C1J1126AE	FORD
--------------	------

---