



DRUM

14.9386.10

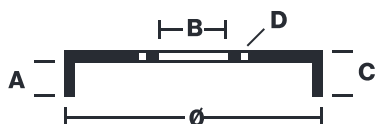
The 14.9386.10 drum is synonymous with reliability

Brembo has developed several design solutions for drum brakes which combine multiple materials to reduce the overall weight. The most popular range of lamellar graphite cast iron drums is supplemented by cast iron drums with a steel sprocket flange and aluminium drums, whereby only the inner part of the drum on which the shoes operate are made of lamellar cast iron, namely the brake band. Additionally drums with built-in bearing kit and hub are added to this range.



- ✓ OE-equivalent
- ✓ Brembo quality
- ✓ Safety
- ✓ Durability

Technical specifications



EAN code 8020584938614	Axle Rear	Diameter 230 mm
Width 39 mm	Height 57,5	Number of holes 5
Centering 65 mm	Max diameter 231,5 mm	

14.9386.10	
AP	55283
BRECO	BT 9386
DIMENSION	230.1 x 39 mm
MAX DIA	231.5 mm
BALANCING	GUARANTEED
MATERIAL	SUB-GROUP 1
WEIGHT	6 kg
	90R
	02D01202/59685

DATE : 06/07/2021 VERSION : 00

COMPATIBLE VEHICLES

COMPATIBLE OE PART NUMBERS

1J0609617B	SKODA
1J0609617B	VW