



DRUM

14.A691.10

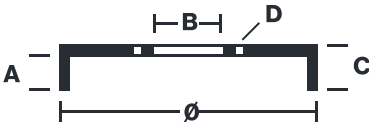
The 14.A691.10 drum is synonymous with reliability

Brembo has developed several design solutions for drum brakes which combine multiple materials to reduce the overall weight. The most popular range of lamellar graphite cast iron drums is supplemented by cast iron drums with a steel sprocket flange and aluminium drums, whereby only the inner part of the drum on which the shoes operate are made of lamellar cast iron, namely the brake band. Additionally drums with built-in bearing kit and hub are added to this range.



- ✓ OE-equivalent
- ✓ Brembo quality
- ✓ Safety
- ✓ Durability

Technical specifications



EAN code 8020584017135	Axle Rear	Diameter 228 mm
Width 68 mm	Height 89,5	Number of holes 5
Centering 63,4 mm	Max diameter 229,6 mm	

		14.A691.10	
AP	55304		
BRECO	BT 1691		
DIMENSION	228.4 x 68 mm		
MAX DIA	229.6 mm		
BALANCING	GUARANTEED		
MATERIAL	SUB-GROUP 1		
WEIGHT	8.1 kg		
	90R		
	02D01202/59695		
<small>DATE : 07/10/2021 VERSION : 00</small>			

COMPATIBLE VEHICLES

COMPATIBLE OE PART NUMBERS

1334973 FORD

1334975 FORD

1361302 FORD

1361304 FORD

2T141126CA FORD

2T141126CB FORD

2T141126CC FORD

2T141126CD FORD

2T141126CE FORD

2T141126DE FORD

4367102 FORD

4367103 FORD

4455981 FORD

4467600 FORD

4937319 FORD

4937320 FORD

4937322 FORD

5135045 FORD

8T161126BA FORD

AT161126AA FORD
