



RCS CORSACORTA RR 110E71140

Master cylinder 110E71140 peerless controllability

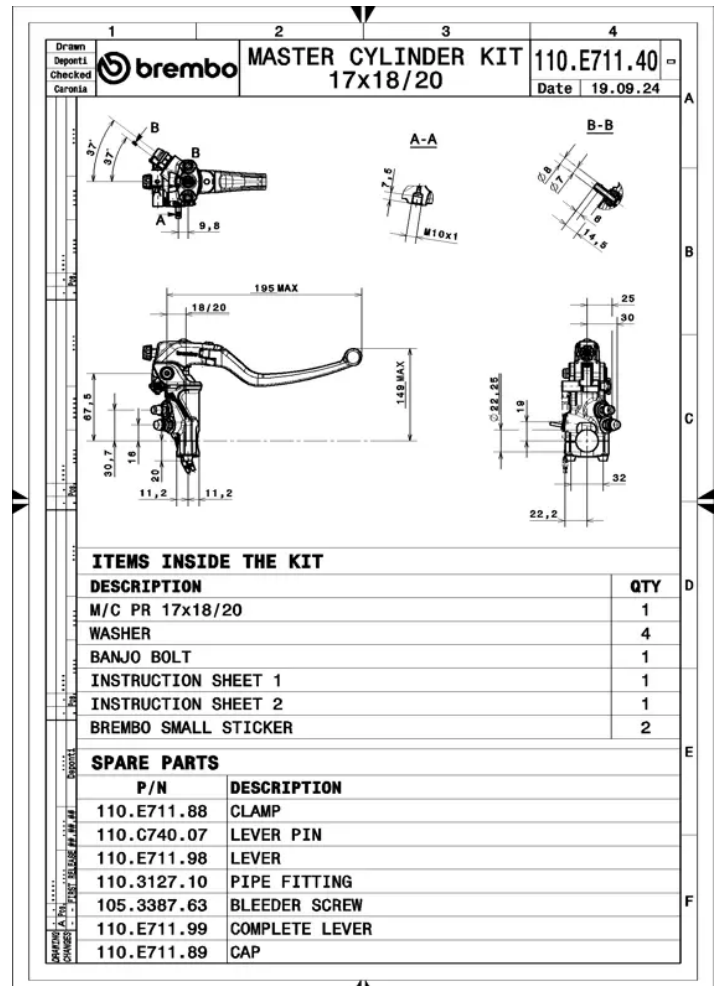
The "RCS corsacorta RR" - Race Replica, carved from a billet, is the next evolution of the radial master cylinder and the closest to those used in racing. The hard titanium grey oxidised finish confers remarkable wear resistance and smooth running of the components, while the float and seals are the same as those used in MotoGP. Like the "RCS corsacorta", the stroke can be varied in three positions (R-S-N), while the offset and lever position can be adjusted for total customisation.



- ✓ Brembo quality
- ✓ Safety
- ✓ Performance
- ✓ Exclusive style
- ✓ Racing inspired
- ✓ Sports driving

Technical specifications

Lever ratio 18-20 mm	Machining Billet	Piston size 17 mm
Protection Anodised	Units per box 1	



COMPATIBLE VEHICLES