



DRUM

14.4979.10

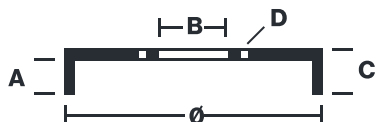
The 14.4979.10 drum is synonymous with reliability

Brembo has developed several design solutions for drum brakes which combine multiple materials to reduce the overall weight. The most popular range of lamellar graphite cast iron drums is supplemented by cast iron drums with a steel sprocket flange and aluminium drums, whereby only the inner part of the drum on which the shoes operate are made of lamellar cast iron, namely the brake band. Additionally drums with built-in bearing kit and hub are added to this range.



- ✓ OE-equivalent
- ✓ Brembo quality
- ✓ Safety
- ✓ Durability

Technical specifications



EAN code 8020584497913	Axle Rear	Diameter 180 mm
Width 46 mm	Height 76,5	Number of holes 4
Centering 39,9 mm	Max diameter 181,3 mm	

		14.4979.10	
AP	E5094		
BRECO	BT 4979		
DIMENSION	179.9 x 46 mm		
MAX DIA	181.3 mm		
BALANCING	GUARANTEED		
MATERIAL	SUB-GROUP 1		
WEIGHT	4 kg		
<small>DATE : 19/12/2023 VERSION : 00</small>			

COMPATIBLE VEHICLES

COMPATIBLE OE PART NUMBERS

1598117	FORD
6086628	FORD