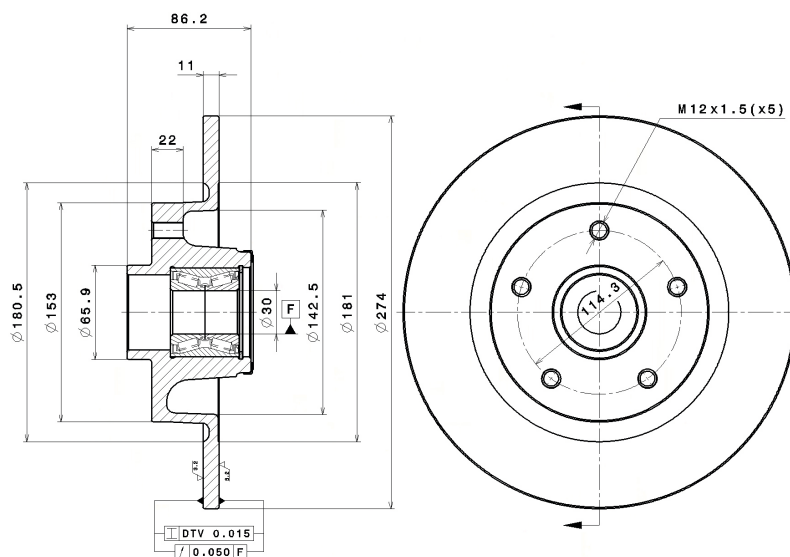


08.B397.17 SUPERSEDED BY 08.B397.27

The reference **08.B397.17** is replaced by **08.B397.27** due to the adaptation to new O.E.

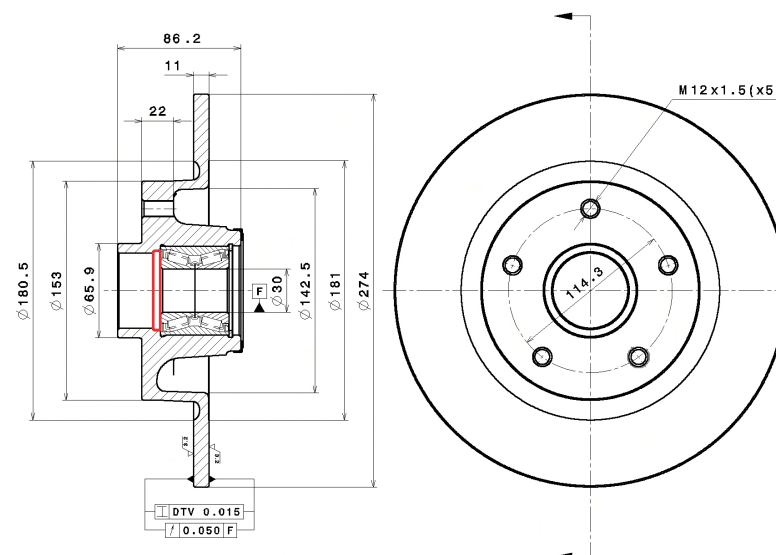
The **OES Renault** corresponding to the new Brembo reference are:
402029646R, 432000007R, 432024048R.

08.B397.17
Rear axle



Breco reference:
BY 6024
AP reference:
15032 Y

08.B397.27
Rear axle



Breco reference:
BY 6100
AP reference:
15108 Y