



DRUM
14.7098.20

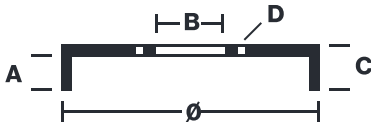
The 14.7098.20 drum is synonymous with reliability

Brembo has developed several design solutions for drum brakes which combine multiple materials to reduce the overall weight. The most popular range of lamellar graphite cast iron drums is supplemented by cast iron drums with a steel sprocket flange and aluminium drums, whereby only the inner part of the drum on which the shoes operate are made of lamellar cast iron, namely the brake band. Additionally drums with built-in bearing kit and hub are added to this range.



- ✓ OE-equivalent
- ✓ Brembo quality
- ✓ Safety
- ✓ Durability

Technical specifications



EAN code
8020584709825

Axle
Rear

Diameter
254 mm

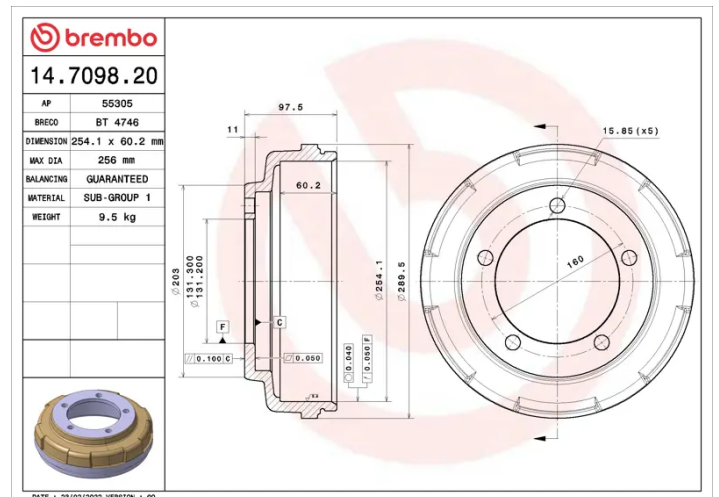
Width
57,5 mm

Height
97,5

Number of holes
5

Centering
131,3 mm

Max diameter
256 mm



COMPATIBLE VEHICLES

COMPATIBLE OE PART NUMBERS

1C1W1126AB	FORD
1C1W1126AD	FORD
1C1W1126AE	FORD
2313908	FORD
4095023	FORD
4146930	FORD
4540218	FORD
ME1C1J1126AE	FORD