



DRUM

14.7246.50

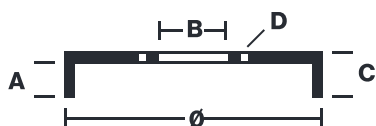
The 14.7246.50 drum is synonymous with reliability

Brembo has developed several design solutions for drum brakes which combine multiple materials to reduce the overall weight. The most popular range of lamellar graphite cast iron drums is supplemented by cast iron drums with a steel sprocket flange and aluminium drums, whereby only the inner part of the drum on which the shoes operate are made of lamellar cast iron, namely the brake band. Additionally drums with built-in bearing kit and hub are added to this range.

- ✓ OE-equivalent
- ✓ Brembo quality
- ✓ Safety
- ✓ Durability
- ✓ Bearing kit



Technical specifications



EAN code
8020584724651

Axle
Rear

Diameter
180 mm

Width
44 mm

Height
76

Number of holes
4

Centering
50,3 mm

Max diameter
181 mm

Bearing kit

14.7246.50	
AP	55257
BRECO	BK 7246
DIMENSION	180,1 x 44 mm
MAX DIA	181 mm
BALANCING	GUARANTEED
MATERIAL	SUB-GROUP 1
WEIGHT	4,6 kg

DATE : 26/01/2023 VERSION : 00

COMPATIBLE VEHICLES