



DRUM

14.7715.10

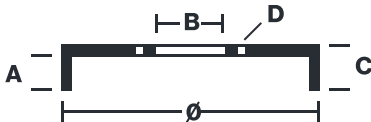
The 14.7715.10 drum is synonymous with reliability

Brembo has developed several design solutions for drum brakes which combine multiple materials to reduce the overall weight. The most popular range of lamellar graphite cast iron drums is supplemented by cast iron drums with a steel sprocket flange and aluminium drums, whereby only the inner part of the drum on which the shoes operate are made of lamellar cast iron, namely the brake band. Additionally drums with built-in bearing kit and hub are added to this range.



- ✓ OE-equivalent
- ✓ Brembo quality
- ✓ Safety
- ✓ Durability

Technical specifications



EAN code 8020584771518	Axle Rear	Diameter 230 mm
Width 50 mm	Height 66	Number of holes 4
Centering 57 mm	Max diameter 231 mm	

14.7715.10	
AP	55263
BRECO	BT 7715
DIMENSION	230.1 x 50 mm
MAX DIA	231 mm
BALANCING	GUARANTEED
MATERIAL	SUB-GROUP 1
WEIGHT	4.2 kg
<small>DATE : 30/03/2023 VERSION : 00</small>	

COMPATIBLE VEHICLES

COMPATIBLE OE PART NUMBERS

568063 OPEL

568267 OPEL

90495034 OPEL

93189219 OPEL

90495034 VAUXHALL

93189219 VAUXHALL
