



# DRUM

## 14.A685.10

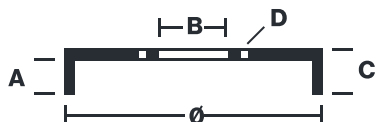
The 14.A685.10 drum is synonymous with reliability

Brembo has developed several design solutions for drum brakes which combine multiple materials to reduce the overall weight. The most popular range of lamellar graphite cast iron drums is supplemented by cast iron drums with a steel sprocket flange and aluminium drums, whereby only the inner part of the drum on which the shoes operate are made of lamellar cast iron, namely the brake band. Additionally drums with built-in bearing kit and hub are added to this range.



- ✓ OE-equivalent
- ✓ Brembo quality
- ✓ Safety
- ✓ Durability

### Technical specifications



EAN code  
8020584023051

Axle  
Rear

Diameter  
180 mm

Width  
46 mm

Height  
65

Number of holes  
4

Centering  
64 mm

Max diameter  
182 mm

<b>14.A685.10</b>	
AP	55329
BRECO	BT 1685
DIMENSION	180.1 x 41 mm
MAX DIA	182 mm
BALANCING	GUARANTEED
MATERIAL	SUB-GROUP 1
WEIGHT	3.1 kg
	90R 02D01202/59684

DATE : 06/07/2021 VERSION : 00

**COMPATIBLE VEHICLES**

## COMPATIBLE OE PART NUMBERS

<b>MB587582</b>	MITSUBISHI
-----------------	------------

<b>MB699290</b>	MITSUBISHI
-----------------	------------

<b>MB587582</b>	PROTON
-----------------	--------

<b>MB699290</b>	PROTON
-----------------	--------