



DRUM

14.D996.10

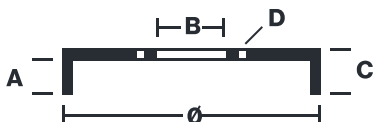
The 14.D996.10 drum is synonymous with reliability

Brembo has developed several design solutions for drum brakes which combine multiple materials to reduce the overall weight. The most popular range of lamellar graphite cast iron drums is supplemented by cast iron drums with a steel sprocket flange and aluminium drums, whereby only the inner part of the drum on which the shoes operate are made of lamellar cast iron, namely the brake band. Additionally drums with built-in bearing kit and hub are added to this range.

- ✓ OE-equivalent
- ✓ Brembo quality
- ✓ Safety
- ✓ Durability



Technical specifications



EAN code 8020584315484	Axle Rear	Diameter 228,4 mm
Width 47 mm	Height 56,3	Number of holes 5
Centering 65 mm	Max diameter 229,8 mm	

		14.D996.10	
AP	E5113		
BRECO	BT 1188		
DIMENSION	228.4 x 47 mm		
MAX DIA	229.8 mm		
BALANCING	GUARANTEED		
MATERIAL	SUB-GROUP 1		
WEIGHT	5.5 kg		
E11	90R		
	02D01202/59685		
<small>DATE : 31/08/2020 VERSION : 00</small>			

COMPATIBLE VEHICLES

COMPATIBLE OE PART NUMBERS

2Q0609617A	AUDI
------------	------

2Q0609617A	SEAT
------------	------

2Q0609617A	SKODA
------------	-------

2Q0609617A	VW
------------	----
