



DRUM

14.3106.10

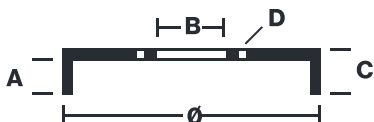
The 14.3106.10 drum is synonymous with reliability

Brembo has developed several design solutions for drum brakes which combine multiple materials to reduce the overall weight. The most popular range of lamellar graphite cast iron drums is supplemented by cast iron drums with a steel sprocket flange and aluminium drums, whereby only the inner part of the drum on which the shoes operate are made of lamellar cast iron, namely the brake band. Additionally drums with built-in bearing kit and hub are added to this range.

- ✓ OE-equivalent
- ✓ Brembo quality
- ✓ Safety
- ✓ Durability



Technical specifications



EAN code
8020584310618

Axle
Front

Diameter
170 mm

Width
37 mm

Height
67

Number of holes
4

Centering
35 mm

Max diameter
172 mm

		14.3106.10	
AP	55001		
BRECO	BT 3106		
DIMENSION	170.3 x 37 mm		
MAX DIA	172 mm		
BALANCING	GUARANTEED		
MATERIAL	SUB-GROUP 1		
WEIGHT	4 kg		
	90R 02D01202/68833		

DATE : 07/09/2022 VERSION : 00

COMPATIBLE VEHICLES

COMPATIBLE OE PART NUMBERS

4340300

FIAT