



DRUM

14.E965.10

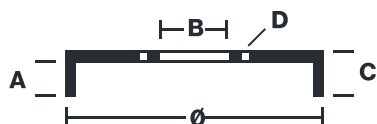
The 14.E965.10 drum is synonymous with reliability

Brembo has developed several design solutions for drum brakes which combine multiple materials to reduce the overall weight. The most popular range of lamellar graphite cast iron drums is supplemented by cast iron drums with a steel sprocket flange and aluminium drums, whereby only the inner part of the drum on which the shoes operate are made of lamellar cast iron, namely the brake band. Additionally drums with built-in bearing kit and hub are added to this range.

- ✓ OE-equivalent
- ✓ Brembo quality
- ✓ Safety
- ✓ Durability



Technical specifications



EAN code
8020584324776

Axle
Rear

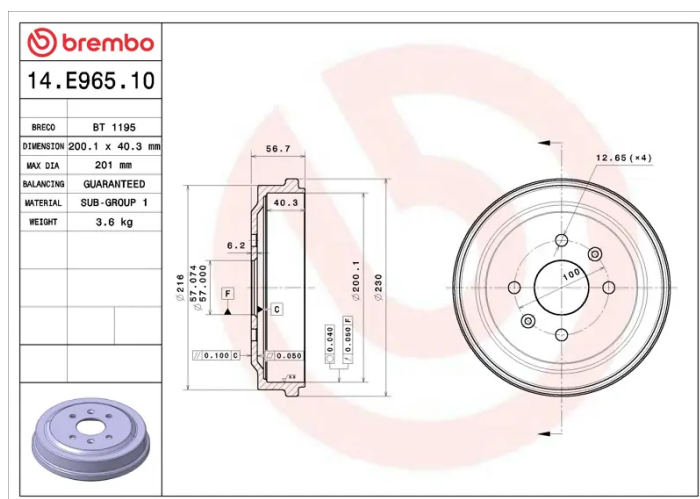
Diameter
200,1 mm

Width
40,3 mm

Height
56,7

Number of holes
4

Max diameter
201 mm



COMPATIBLE VEHICLES

COMPATIBLE OE PART NUMBERS

95903584	CHEVROLET
96386901	CHEVROLET
96471276	CHEVROLET
96471279	CHEVROLET
96471783	CHEVROLET
96473233	CHEVROLET
96386900	DAEWOO
96386901	DAEWOO