



DRUM

14.7747.10

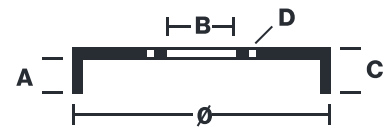
The 14.7747.10 drum is synonymous with reliability

Brembo has developed several design solutions for drum brakes which combine multiple materials to reduce the overall weight. The most popular range of lamellar graphite cast iron drums is supplemented by cast iron drums with a steel sprocket flange and aluminium drums, whereby only the inner part of the drum on which the shoes operate are made of lamellar cast iron, namely the brake band. Additionally drums with built-in bearing kit and hub are added to this range.

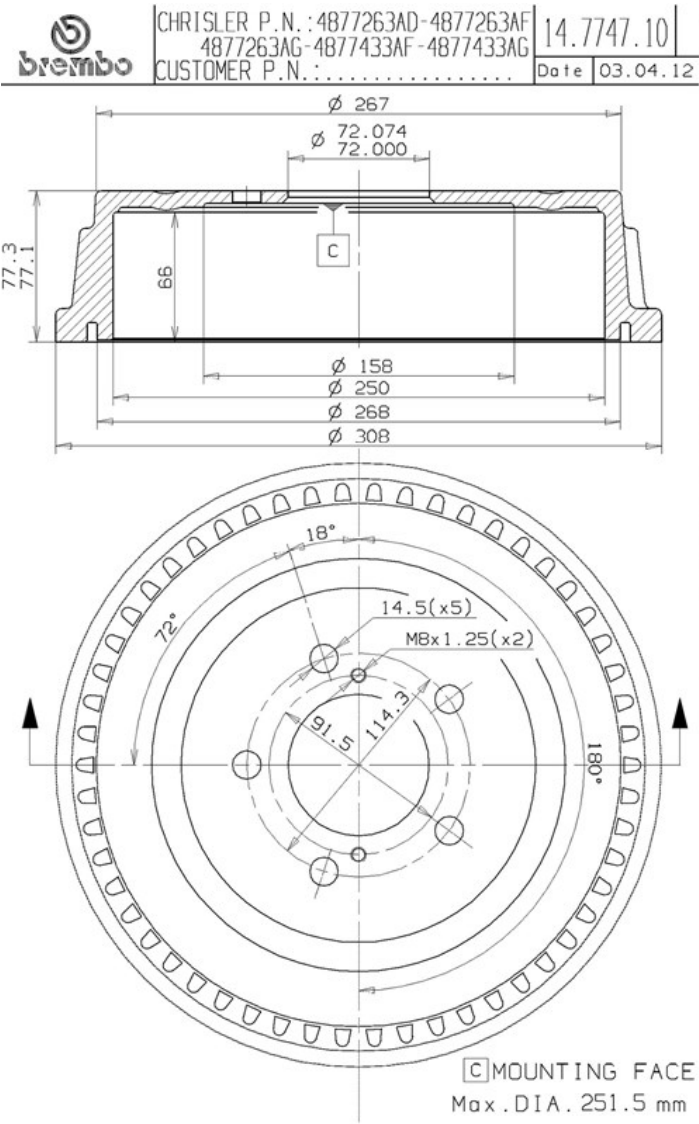


- ✓ OE-equivalent
- ✓ Brembo quality
- ✓ Safety
- ✓ Durability

Technical specifications



EAN code	Axle	Diameter
8020584774717	Rear	250 mm
Width	Height	Number of holes
66 mm	77,2	5
Centering	Max diameter	
72 mm	251,5 mm	



COMPATIBLE VEHICLES

COMPATIBLE OE PART NUMBERS

4683433	CHRYSLER
4721263	CHRYSLER
4877263	CHRYSLER
4877263AD	CHRYSLER
4877263AG	CHRYSLER
4877433	CHRYSLER
4877433AG	CHRYSLER
5019407AA	CHRYSLER
4683433	DODGE
4877263AF	DODGE
4877433AF	DODGE
4683433	PLYMOUTH