



DRUM

14.A695.10

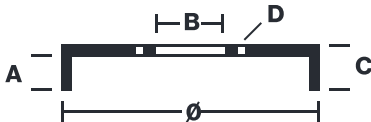
The 14.A695.10 drum is synonymous with reliability

Brembo has developed several design solutions for drum brakes which combine multiple materials to reduce the overall weight. The most popular range of lamellar graphite cast iron drums is supplemented by cast iron drums with a steel sprocket flange and aluminium drums, whereby only the inner part of the drum on which the shoes operate are made of lamellar cast iron, namely the brake band. Additionally drums with built-in bearing kit and hub are added to this range.

- ✓ OE-equivalent
- ✓ Brembo quality
- ✓ Safety
- ✓ Durability



Technical specifications



EAN code
8020584017128

Axle
Rear

Diameter
228 mm

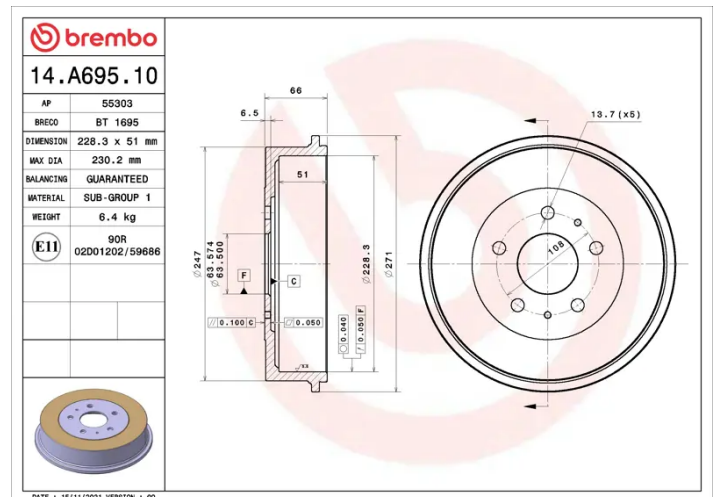
Width
51 mm

Height
66

Number of holes
5

Centering
63,5 mm

Max diameter
230,2 mm



COMPATIBLE VEHICLES

COMPATIBLE OE PART NUMBERS

1327834	FORD
1458826	FORD
1710330	FORD
1743443	FORD
1781451	FORD
2005461	FORD
3M511126AC	FORD
3M511126BA	FORD
3M511126BB	FORD
BV611126BA	FORD
BV611126BB	FORD
BV611126BC	FORD