



DRUM

14.7714.10

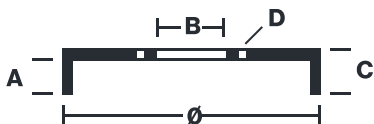
The 14.7714.10 drum is synonymous with reliability

Brembo has developed several design solutions for drum brakes which combine multiple materials to reduce the overall weight. The most popular range of lamellar graphite cast iron drums is supplemented by cast iron drums with a steel sprocket flange and aluminium drums, whereby only the inner part of the drum on which the shoes operate are made of lamellar cast iron, namely the brake band. Additionally drums with built-in bearing kit and hub are added to this range.



- ✓ OE-equivalent
- ✓ Brembo quality
- ✓ Safety
- ✓ Durability

Technical specifications



EAN code 8020584771419	Axle Rear	Diameter 300 mm
Width 72,5 mm	Height 92	Number of holes 5
Centering 140 mm	Max diameter 302,5 mm	

14.7714.10	
AP	E5262
BREGO	BT 7714
DIMENSION	300 x 72.5 mm
MAX DIA	302.5 mm
BALANCING	GUARANTEED
MATERIAL	SUB-GROUP 1
WEIGHT	10.4 kg

DATE : 20/07/2022 VERSION : 00

COMPATIBLE VEHICLES

COMPATIBLE OE PART NUMBERS

424640 PEUGEOT