



DRUM

14.3161.10

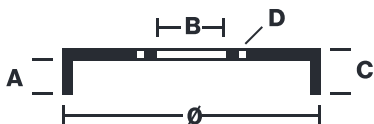
The 14.3161.10 drum is synonymous with reliability

Brembo has developed several design solutions for drum brakes which combine multiple materials to reduce the overall weight. The most popular range of lamellar graphite cast iron drums is supplemented by cast iron drums with a steel sprocket flange and aluminium drums, whereby only the inner part of the drum on which the shoes operate are made of lamellar cast iron, namely the brake band. Additionally drums with built-in bearing kit and hub are added to this range.



- ✓ OE-equivalent
- ✓ Brembo quality
- ✓ Safety
- ✓ Durability

Technical specifications



EAN code	Axle	Diameter
8020584316115	Rear	254 mm
Width	Height	Number of holes
63,6 mm	98	5
Centering	Max diameter	
72 mm	255,6 mm	

		14.3161.10	
AP	55011		
BRECO	BT 3161		
DIMENSION	254.2 x 63.4 mm		
MAX DIA	256 mm		
BALANCING	GUARANTEED		
MATERIAL	SUB-GROUP 1		
WEIGHT	9 kg		
E11	90R		
	02D01202/59682		

COMPATIBLE VEHICLES

COMPATIBLE OE PART NUMBERS

4449694 ALFA ROMEO

424722 CITROËN

ZF4449694 CITROËN

1313675080 FIAT

4449694 FIAT

6001070416 FIAT

424722 PEUGEOT

4449694 PEUGEOT

4449694 TALBOT
