



# DRUM

## 14.4726.10

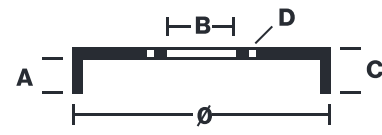
**The 14.4726.10 drum is synonymous with reliability**

Brembo has developed several design solutions for drum brakes which combine multiple materials to reduce the overall weight. The most popular range of lamellar graphite cast iron drums is supplemented by cast iron drums with a steel sprocket flange and aluminium drums, whereby only the inner part of the drum on which the shoes operate are made of lamellar cast iron, namely the brake band. Additionally drums with built-in bearing kit and hub are added to this range.

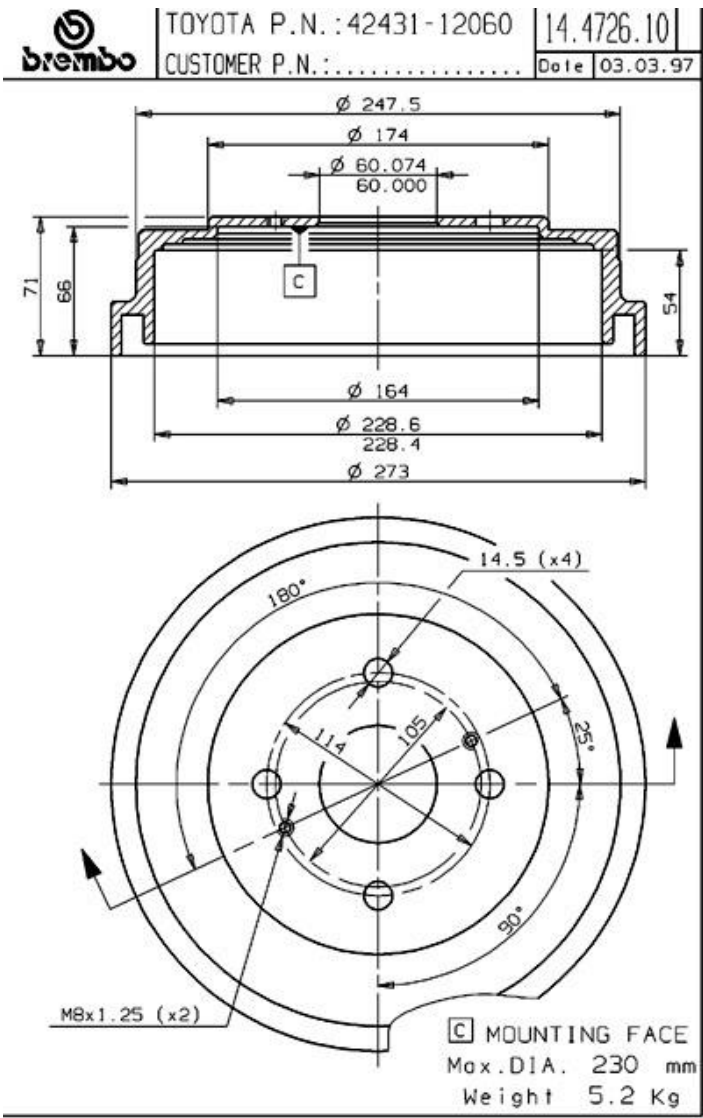
- ✓ OE-equivalent
- ✓ Brembo quality
- ✓ Safety
- ✓ Durability



Technical specifications



EAN code	Axle	Diameter
8020584472613	Rear	228 mm
Width	Height	Number of holes
54 mm	71	4
Centering	Max diameter	
60 mm	230 mm	



COMPATIBLE VEHICLES

COMPATIBLE OE PART NUMBERS

4243112040	TOYOTA
4243112060	TOYOTA
4243112080	TOYOTA
4243112081	TOYOTA
4243114010	TOYOTA
4243114030	TOYOTA
4243114060	TOYOTA
4243114061	TOYOTA
4243120030	TOYOTA
4243120031	TOYOTA
4243120032	TOYOTA
4243120040	TOYOTA
4243120050	TOYOTA
4243122050	TOYOTA
4243127020	TOYOTA