



# DRUM

## 14.4733.10

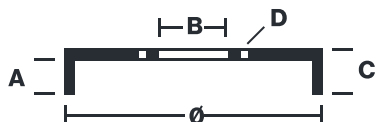
The 14.4733.10 drum is synonymous with reliability

Brembo has developed several design solutions for drum brakes which combine multiple materials to reduce the overall weight. The most popular range of lamellar graphite cast iron drums is supplemented by cast iron drums with a steel sprocket flange and aluminium drums, whereby only the inner part of the drum on which the shoes operate are made of lamellar cast iron, namely the brake band. Additionally drums with built-in bearing kit and hub are added to this range.



- ✓ OE-equivalent
- ✓ Brembo quality
- ✓ Safety
- ✓ Durability

### Technical specifications



EAN code  
**8020584473313**

Axle  
**Rear**

Diameter  
**254 mm**

Width  
**61 mm**

Height  
**71**

Number of holes  
**6**

Centering  
**96,5 mm**

Max diameter  
**255,5 mm**

<b>14.4733.10</b>	
AP	55082
BRECO	BT 4733
DIMENSION	254.1 x 61 mm
MAX DIA	255.5 mm
BALANCING	GUARANTEED
MATERIAL	SUB-GROUP 1
WEIGHT	6.6 kg
	90R
	02D01202/59680

DATE : 18/02/2021 VERSION : 00

## COMPATIBLE OE PART NUMBERS

94226829                      BEDFORD

---

94226829                      CHEVROLET

---

E3FZ1107B                    CHEVROLET

---

8942268291                   ISUZU

---

9030906160                   ISUZU

---

94226829                    ISUZU

---

568062                        OPEL

---